

WebLogic Server Configuration Checklist
Oracle Banking Payments
Release 14.2.0.0.0
[November 2018]



Table of Contents

1. INTRODUCTION	1
1.1 ABOUT THIS MANUAL.....	1
2. WEBLOGIC SERVER CONFIGURATION.....	2
2.1 CHECK LIST TO VALIDATE WEBLOGIC SERVER CONFIGURATION.....	2

1. Introduction

1.1 About This Manual

This document briefs the list of checklists to validate WebLogic Server Configuration, to make it compatible to Oracle Banking Payments 14.2.

2. WebLogic Server Configuration

2.1 Check list to Validate WebLogic Server Configuration

Below are the list of steps to validate WebLogic Server Configuration post successful installation of OBPM

1. Identify the Managed Server in which the Application EAR is deployed
 - a. Login to the WebLogic Console
 - b. Navigate to Environment --> Servers
 - c. From the List of Servers, locate and click on the Managed Server in which the Application EAR is deployed

The screenshot shows the Oracle WebLogic Server Administration Console. The left navigation pane has 'Servers' highlighted. The main content area shows a table of servers. A red circle highlights the 'Server1' row. A red arrow points to the text 'Click the Managed Server for Server Configuration' above the table.

Name	Type	Cluster	Machine	State	Health	Listen Port
Admin142(admin)	Configured			RUNNING	OK	4001
Server1	Configured		Machine1	RUNNING	OK	4010
ServerU2	Configured		Machine1	RUNNING	OK	4024

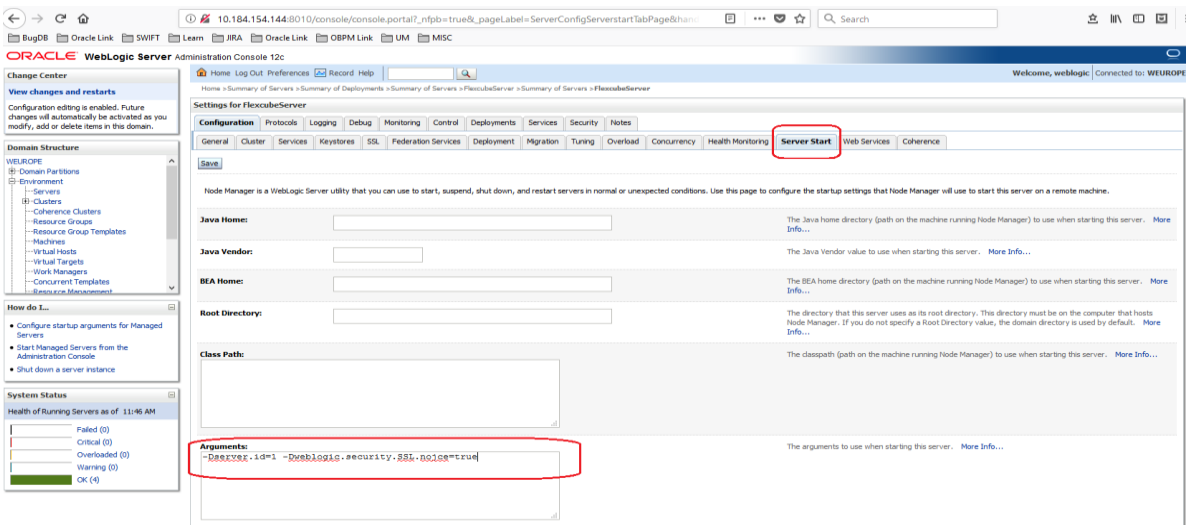
2. Verifying Arguments for Reference Number Generation

- a. After clicking the Managed Server, navigate to 'Server Start' tab under the 'Configuration Tab'
- b. Verify the Arguments as shown below

-Dserver.id=1 -Dweblogic.security.SSL.nojce=true

Note

Parameter '-Dserver.id=1' is required for the Reference Number Generation in OBPM Transaction screens. If not set, OBPM Transaction screens on launch will report Error on click of NEW



3. Data Source Setup Verification

a. Navigate to the Data Sources Configuration

b. Below Data Sources must be mapped in the Data Sources Configuration

- i. Jdbc/fcjdeVDS
- ii. Jdbc/fcjdeVDS_GTXN
- iii. Jdbc/fcjdeVDS_XA
- iv. Jdbc/fcjSchedulerDS

ORACLE WebLogic Server Administration Console 12c

Home Log Out Preferences Record Help

Welcome, pminfra

Home > Summary of JDBC Data Sources

Summary of JDBC Data Sources

Configuration Monitoring

A JDBC data source is an object bound to the JNDI tree that provides database connectivity through a pool of JDBC connections. Applications can look up a data source on the JNDI tree and then borrow a database connection from a data source.

This page summarizes the JDBC data source objects that have been created in this domain.

Customize this table

Data Sources (Filtered - More Columns Exist)

Click the **Lock & Edit** button in the Change Center to activate all the buttons on this page.

Name	Type	JNDI Name	Targets	Scope	Domain Partitions
jdbc/fcjdeDS	Generic	jdbc/fcjdeDS	ServerA1, ServerMPS, ServerSchd	Global	
jdbc/fcjdeDS_GTXN	Generic	jdbc/fcjdeDS_GTXN	ServerA1, ServerMPS	Global	
jdbc/fcjdeDS_YA	Generic	jdbc/fcjdeDS_YA	ServerA1, ServerSchd	Global	
jdbc/fcjschedulerDS	Generic	jdbc/fcjschedulerDS	ServerA1, ServerSchd	Global	

Showing 1 to 4 of 4 Pre

Showing 1 to 4 of 4 Pre

Change Center

View changes and restarts

Click the **Lock & Edit** button to modify, add or delete items in this domain.

Lock & Edit

Release Configuration

Domain Structure

PH43

- Domain Partitions
- Environment
- Deployments
- Services
- Security Realms
- Interoperability
- Diagnostics

How do I...?

- Create JDBC generic data sources
- Create JDBC GridLink data sources
- Create JDBC multi data sources
- Create UCP data sources
- Create Proxy data sources

System Status

Health of Running Servers as of 10:23 AM

c. Below listed Data Sources must be configured as NXA (Please refer to the below screenshot for Jdbc/fcjdeDS_GTXN)

- i. Jdbc/fcjdeDS
- ii. Jdbc/fcjdeDS_GTXN
- iii. Jdbc/fcjschedulerDS

Home Log Out Preferences Record Help

Welcome, pminfra

Home > Summary of Servers > Summary of JDBC Data Sources > jdbc/fcjdeDS_GTXN > Summary of JDBC Data Sources > jdbc/fcjdeDS > Summary of JDBC Data Sources > jdbc/fcjdeDS_GTXN

Settings for jdbc/fcjdeDS_GTXN

Configuration Targets Monitoring Control Security Notes

General Connection Pool Oracle ONS Transaction Diagnostics Identity Options

Click the **Lock & Edit** button in the Change Center to modify the settings on this page.

Save

The connection pool within a JDBC data source contains a group of JDBC connections that applications reserve, use, and then return to the pool. The connection pool and the connections within it are created when the connection pool is registered, usually WebLogic Server or when deploying the data source to a new target.

Use this page to define the configuration for this data source's connection pool.

URL: jdbc:oracle:thin:@whf03aea.in.oracle.com:1523:pmtmppdb The URL of the database to connect to. The format of the URL varies by JDBC driver.

Driver Class Name: oracle.jdbc.OracleDriver The full package name of JDBC driver class used to create the physical database connection pool. (Note that this driver class must be in the classpath of any server to which you are deploying.) More Info...

Properties: user=CNUSR18 The list of properties passed to the JDBC driver that are used to create physical database connections. For example: server=dserver1. List each property=value pair on a separate line. More Info

System Properties: The list of System Properties names passed to the JDBC driver that are used to create physical connections. For example: server=dserver1. List each property=value pair on a separate line.

Encrypted Properties: Add Securely The list of encrypted Properties passed to the JDBC driver that are used to create physical connections. For example: password=value. There are two ways to enter the values: values at once but the encrypted values will be visible on the screen until you save the option, list each property=value pair on a separate line. Values entered will be encrypted. enter the information securely, save any other changes that you wish to make to this page. Add Securely button. On the Add a new Encrypted Property page, enter the property name and click OK. Repeat for additional encrypted property values. More Info

Change Center

View changes and restarts

Click the **Lock & Edit** button to modify, add or delete items in this domain.

Lock & Edit

Release Configuration

Domain Structure

PH43

- Domain Partitions
- Environment
- Deployments
- Services
- Security Realms
- Interoperability
- Diagnostics

How do I...?

- Configure testing options for a JDBC data source
- Configure the statement cache for a JDBC connection pool
- Configure credential mapping for a JDBC data source
- Configure connection harvesting for a connection pool
- Encrypt connection properties

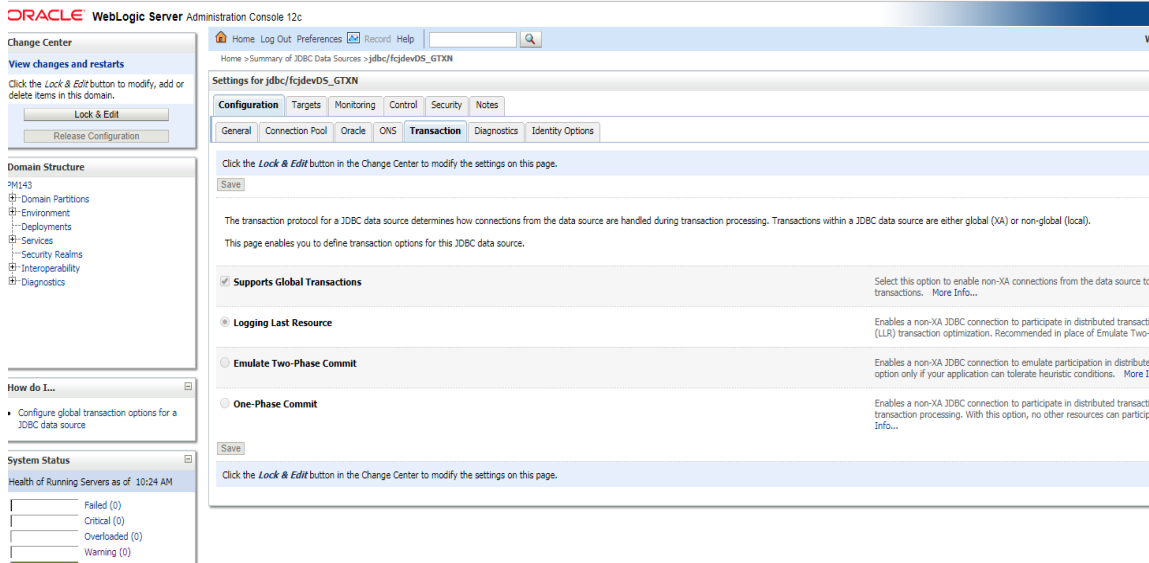
System Status

Health of Running Servers as of 5:26 PM

- Failed (0)
- Critical (0)
- Overloaded (0)
- Warning (0)
- OK (3)

d. Below options must be enabled for the GTXN Data Source - Jdbc/fcjdeVDS_GTXN

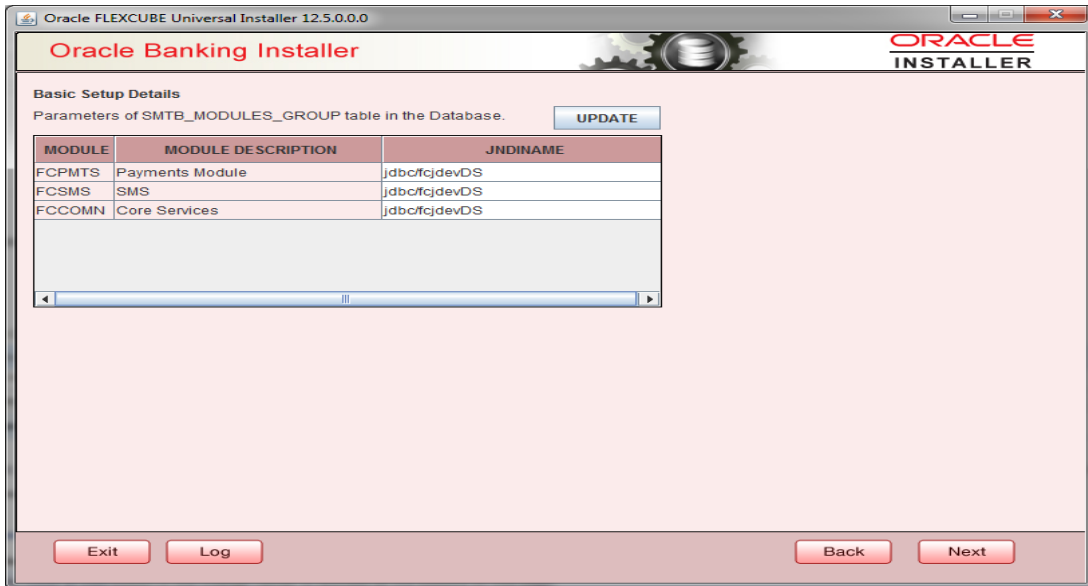
- i. Supports Global Transactions
- ii. Logging Last Resource



4. Verifying data in SMTB_MODULES_GROUP Table

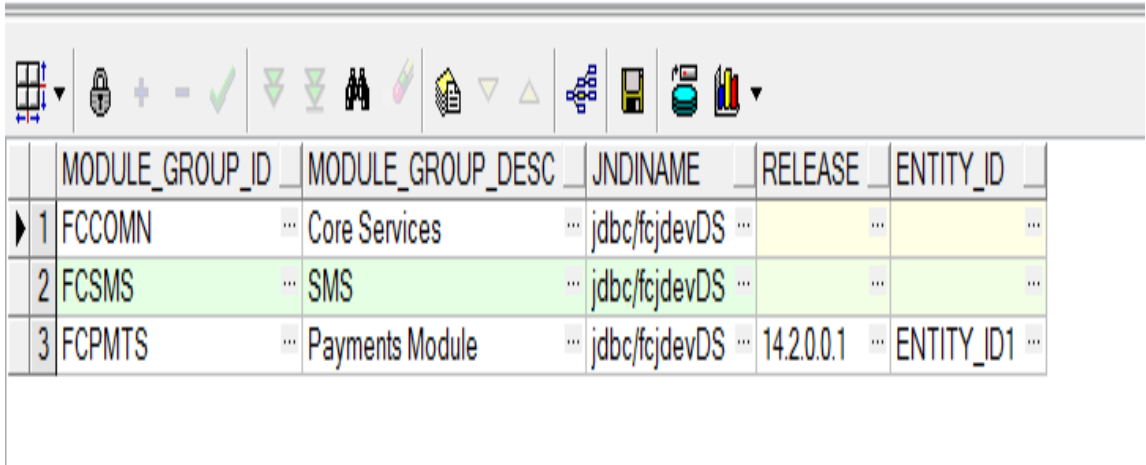
- i. JNDI Names Input during Installation process must be verified with records in the SMTB_MODULES_GROUP table

Below is the screenshot of Data Input during installation



Below is the screenshot of records in the SMTB_MODULES_GROUP table

```
SELECT * FROM smtb_modules_group
```



	MODULE_GROUP_ID	MODULE_GROUP_DESC	JNDINAME	RELEASE	ENTITY_ID
1	FCCOMN	Core Services	jdbc/fc/devDS		
2	FCSMS	SMS	jdbc/fc/devDS		
3	FCPMTS	Payments Module	jdbc/fc/devDS	14.2.0.0.1	ENTITY_ID1

Note

Post these changes restart the managed server



Oracle Banking Payments WebLogic Server Configuration Checklist
[November 2018]
Version 14.2.0.0.0

Oracle Financial Services Software Limited
Oracle Park
Off Western Express Highway
Goregaon (East)
Mumbai, Maharashtra 400 063
India

Worldwide Inquiries:
Phone: +91 22 6718 3000
Fax: +91 22 6718 3001
www.oracle.com/financialservices/

Copyright © 2007, 2018 Oracle and/or its affiliates. All rights reserved.

Oracle and Java are registered trademarks of Oracle and/or its affiliates. Other names may be trademarks of their respective owners.

U.S. GOVERNMENT END USERS: Oracle programs, including any operating system, integrated software, any programs installed on the hardware, and/or documentation, delivered to U.S. Government end users are “commercial computer software” pursuant to the applicable Federal Acquisition Regulation and agency-specific supplemental regulations. As such, use, duplication, disclosure, modification, and adaptation of the programs, including any operating system, integrated software, any programs installed on the hardware, and/or documentation, shall be subject to license terms and license restrictions applicable to the programs. No other rights are granted to the U.S. Government.

This software or hardware is developed for general use in a variety of information management applications. It is not developed or intended for use in any inherently dangerous applications, including applications that may create a risk of personal injury. If you use this software or hardware in dangerous applications, then you shall be responsible to take all appropriate failsafe, backup, redundancy, and other measures to ensure its safe use. Oracle Corporation and its affiliates disclaim any liability for any damages caused by use of this software or hardware in dangerous applications.

This software and related documentation are provided under a license agreement containing restrictions on use and disclosure and are protected by intellectual property laws. Except as expressly permitted in your license agreement or allowed by law, you may not use, copy, reproduce, translate, broadcast, modify, license, transmit, distribute, exhibit, perform, publish or display any part, in any form, or by any means. Reverse engineering, disassembly, or decompilation of this software, unless required by law for interoperability, is prohibited.
The information contained herein is subject to change without notice and is not warranted to be error-free. If you find any errors, please report them to us in writing.

This software or hardware and documentation may provide access to or information on content, products and services from third parties. Oracle Corporation and its affiliates are not responsible for and expressly disclaim all warranties of any kind with respect to third-party content, products, and services. Oracle Corporation and its affiliates will not be responsible for any loss, costs, or damages incurred due to your access to or use of third-party content, products, or services.